



EMS REPORT

A CharterCARE News Bulletin for EMS Professionals

OUR LADY OF FATIMA HOSPITAL
ROGER WILLIAMS MEDICAL CENTER
ROGER WILLIAMS CANCER CENTER
ST. JOSEPH HEALTH CENTER
BLACKSTONE VALLEY SURGICARE
SOUTHERN NE REHABILITATION CENTER
CHARTERCARE MEDICAL ASSOCIATES
CHARTERCARE PROVIDER GROUP RI, LLC
CHARTERCARE HOME HEALTH

September 2021

Fatima Partners with Davita Dialysis

DaVita Hospital Services has teamed with Fatima Hospital to provide inpatient dialysis. A leader in clinical quality, DaVita is providing dialysis services Monday, Wednesday and Friday. Services will expand to 24/7 shortly.

DaVita is a trusted partner for inpatient dialysis modalities. DaVita's service is predicated on patient safety, clinical quality, operational efficiency, and survey readiness. They are the first and longest national Joint Commission-accredited provider of inpatient kidney care and apheresis therapies. DaVita has over 2,700 outpatient dialysis clinics and over 900 hospital partners across the US. DaVita is focused on providing high-quality clinical care in inpatient and outpatient settings and leads the industry in clinical performance. Prospect Medical has a national agreement with DaVita.

This is an exciting and welcome development to help solidify this important service to our patients. The reputation of DaVita speaks for itself and the availability of routine dialysis treatment performed by trained and experienced staff will enhance the quality and safety of the care provided.

DaVita is providing new equipment and supplies to support the service, located within the CareOne unit. Susan Nicholaou RN, CNN, will serve as Group Administrator and Pamela Gregoire, RN, as Clinical Manager.

CharterCARE Medical Associates Welcomes New Physicians



Dr. Giselle Torres-Cordero board certified in family medicine, is joining Drs. Martin Kerzer and Gregory Steinmetz at Associates in Primary Care Medicine in Warwick. She has a special interest in women's health, reducing healthcare disparities and improving population health outcomes. Giselle completed her undergraduate studies in cellular and molecular biology, graduated from the Universidad Central del Caribe School of Medicine in Puerto Rico and fulfilled her family residency at New York Medical College at St. Joseph's Medical Center. A member of the American Academy of Family Physicians, she is fluent in Spanish, is accepting new patients and can be reached at 467-3115.



Dr. Darshak Patel is joining Drs. Michael Hayden and Dennis Botelho in practice at 725 Reservoir Avenue in Cranston. A graduate of Northeastern University, he received his medical degree from Windsor School of Medicine in the Bahamas and completed his family medicine residency at Houston Medical Center. Dr. Patel is fluent in Gujarati and Hindi and is accepting new patients. He can be reached at 942-2320.

EMERGENCY GRAND ROUNDS Wed, Oct 13th, 6 pm via Zoom

Topic: **Legal Aspects of EMS
and Documentation**

Speaker: **Abigail Williams, RN, JD, MPH,
MS, CPPS**

Medical, nursing, and technical staff involved in the care of emergency patients are invited to attend.

Please RSVP by calling 456-3398 or by emailing ebrennan@chartercare.org

Mammography Re-accredited at RWMC

Roger Williams Medical Center recently underwent a successful inspection of its mammography program. The Mammography Quality Standards Act requires mammography facilities to meet uniform quality standards annually. Under the law, all mammography facilities must be accredited by an FDA-approved accreditation body and be certified by FDA. Paula Turgeon, Senior Mammographer, was instrumental in the success of the survey. The inspector stated the program has done an exceptional job meeting all of the requirements.

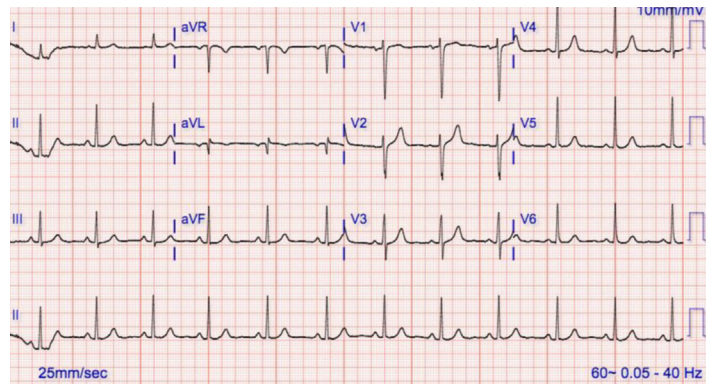
ECG of the Month September 2021

This is a 62-year-old female patient with upper epigastric pain and frequent belching. She has had the symptoms since earlier in the day. She describes the pain as burning.

1. What is the ECG rhythm?
2. How would you treat this patient?

Submit your answers to john.jardine@chartercare.org for a chance to win a Dunkin' gift card!

Answers in next month's edition.



EMS Pearl of the Month July 2021

A mnemonic to remember the SEPSIS “bundle”:

- B** Blood cultures
- U** Urine output
- F** Fluids
- A** Antibiotics
- L** Lactate
- O** Oxygen

ECG of the Month July 2021 Answer



The rhythm as shown is ventricular fibrillation. This athlete is at risk of sudden cardiac death if this rhythm is not recognized and treated. It is not uncommon for patients in Vfib to have seizure-like activity on collapsing. Survival from cardiac arrest falls 10% for each minute without CPR!

The American Heart Association (AHA)

recommends a five-part chain of survival for effective emergency cardiac care:

- Immediate recognition and activation of EMS
- Early CPR
- Rapid defibrillation with an AED, when indicated.
- Effective advanced life support (including airway management and ventilation support)
- Integrated post-cardiac arrest care

RWMC Certified for Hip Replacement Surgery

Roger Williams Medical Center has received a two-year recertification of its hip joint replacement program from The Joint Commission, the nation's premier monitor of hospital clinical quality and patient safety.

This Disease-Specific Care (DSC) Certification was awarded following a comprehensive on-site review conducted by Joint Commission reviewers, who assessed:

- What clinical outcomes and other performance measures are used to identify opportunities to improve care.
- Clinical leadership understanding of and commitment to improving the quality of care for patients.

- Patient and caregiver pre-procedure education and preparation for discharge.
- Integration of evidence-based guidelines into daily clinical care planning and delivery

CharterCARE CEO Jeff Liebman congratulated the surgeons and nurses associated with the hip replacement surgery program, stating “This is only the latest indication that our joint replacement program meets the highest national standard for care and that it is a critically important resource for our community of care.”

Nurse Recruitment Bonuses From \$3,000-\$20,000

Facing an historically competitive recruitment environment for registered nurses, as well as the issue of unvaccinated nurses, CharterCARE Health Partners has announced its most aggressive ever schedule of nurse recruitment bonuses. CharterCARE operates Roger Williams and Fatima Hospital, as well as Blackstone Valley Surgicenter, CharterCARE Home Health and CharterCARE Medical Associates.

Sign on bonuses run as high as \$20,000 for special care nurses. Experienced RNs can receive a \$10,000 bonus for

full time work and \$3,000 for part time work.

“Maintaining adequate staffing levels among our nursing workforce is an absolute priority for CharterCARE” stated CEO Jeff Liebman. “We will invest as much as we have to maintain patient safety as well as our nationally recognized quality of care at both Roger Williams and Fatima.”the program has done an exceptional job meeting all of the requirements.